

SCHEERS' PRAYER UPDATE – JANUARY 2010 – RWANDA

Window into life – "Hey, this is NICE!"

Here we are in the States. We arrived just before Christmas and will be here until August. Having been here two months there are times I stop what I'm doing and say, "Hey, this is NICE!" Two of those times:



First, just outside the mission condo we're living in is the Highline Canal Trail. It's a great place to walk and run. Last evening I saw a family of 4 coyotes 50 yards off the trail. From time to time while walking I say, "Hey this is NICE – I'm not surrounded by kids trying to touch me or asking for my watch or hat!"

Second, since being here we've driven a couple thousand miles at least, hours spent on the road. From time to time during those hours in the car I say, "Hey, this is NICE – I've driven for days and not had a car turn left in front of me from the extreme right lane, not once had to stop behind two cars stopped on the road next to each other while their drivers chat a bit, not

once had someone pass me and come within inches of my front bumper when pulling back into the lane in front of me, etc etc." In Rwanda I can't drive the 10 minutes to the office without at least two such things happening.

Five amazing numbers

8 – eight – umunane

The months we'll be here in the States. That's a LONG time to be away from the exciting things happening in New Creation Ministries in Rwanda! It's a LONG time for Tim and Jessica Brubaker to be shouldering the work load without us. Pray for them these things:

- strength physically, spiritually and emotionally
- protection from illness, crisis, computer break downs, etc
- for the right people and resources to be available at just the right times
- refreshing times with family and friends and the Lord Himself
- that much more would be accomplished with much more effectiveness and impact than his limited human resources would allow.

There, that ought to help them a LOT!



59 – fifty-nine – mirongwitanu n'icyenda



The number of pastors in the new Pastoral Training School (PTS) class who are studying right now! The largest previous class was 36. The appreciation of and demand for the PTS is greater than ever! So that we can maintain a better student/teacher ratio the staff will be evaluating these 59 during the three weeks of study. At the end only 30 will be told they can return for further studies. Pray that God would lead in this choosing (we've actually had grown men cry when we've had to dismiss them from the school, and that in a culture where men don't cry!).

We are teaching them the True Gospel and The Christian Life. Pray that those who don't have a grasp on salvation in Christ would grasp it for the first time.

4 – four – kane

The number of new recruits on the way to join the WorldVenture Team in Rwanda! Dan & Rachel Janzen and their two boys are even now raising their support. Luke and Jaymi Raad have just let us know that they have decided to apply with WorldVenture to work in Rwanda. Another young couple will be visiting Rwanda in late February in order to finalize their decision for Rwanda. Another young family has begun correspondence with us, feeling that the work of NCM in Rwanda fits exactly their gifts and vision for ministry

This is exciting to see the ministry of NCM capturing the hearts of sharp young people! Pray that God would open the doors and provide and prepare each of these 4 families for the future He has for them in Rwanda.

12 – twelve – cumi na kabiri

The number of new members of the 600 Club! The 600 Club members are those who have committed to give \$600 a year to subsidize the studies of one pastor in the PTS. I've been praying for at least 30 new members by the time we go back to Rwanda. We've only visited TWO smaller churches and have 12 new members! That's great! The more we have the more we can add staff and improve the service to the students.

The pastor himself gives \$80 in school fees – seems like not much to us for a year of schooling, but it's a real challenge for the rural pastors to come up with it. We feel it's important for the student himself to give of his resources, too, towards his schooling. But there's no way he can give the full \$700 or so per student it takes to run the school. Let us know if you, too, would like to have a part in enabling us to train a pastor in Rwanda through the 600 Club.

?? – The whole tamale! – ??

That's all of our kids and grandkids – we were together over Christmas! It was the first time we've been together with ALL our kids since Matthew's wedding in 2005. Once we were done wrapping presents and putting them under the tree we were astounded at how many there were. Laurie and I looked at each other and said, "This is the first Christmas we've had with grandkids, and there's 3 of them!" What a great time!

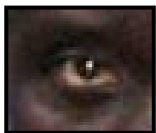
Let me add a date – 1/1/2011

We hope to accept the first students in CLIR, the Christian Leadership Institute of Rwanda. CLIR is the name of the bachelor's level program of NCM. Continue to pray for its development and startup. Of special need at this time are two things:

- We need to have provisional accreditation by the Rwandan government by June so we can begin putting out the word for students
- In order to bring the English capacity of the future students up to university level studies we need to have people come out to head up an ESL program, also by June.



Wisdom from Rwanda



**Ntawarya ibiryo by'ijisho ribi.
No one eats the food of the bad eye!**

The "bad eye" – when you're dealing with someone you get the sense that they have bad feelings towards you; they have a "bad eye" towards you. When you sense these bad feelings beware of what he or she gives you or does for you (that's the "food" of the bad eye); it may not be with good intentions that he or she wants to give it to you.

We're constantly being offered "food", seemingly good things and services. How naïve we often are, not discerning that the "eye" of the giver is "bad" – out to drive us further in debt, out to enslave us, out to pull us away from what is really good and true and important in life.

Let's crank up our discernment – there's a lot of "bad eyes" out there!

Partners in Him,

Gary and Laurie Scheer